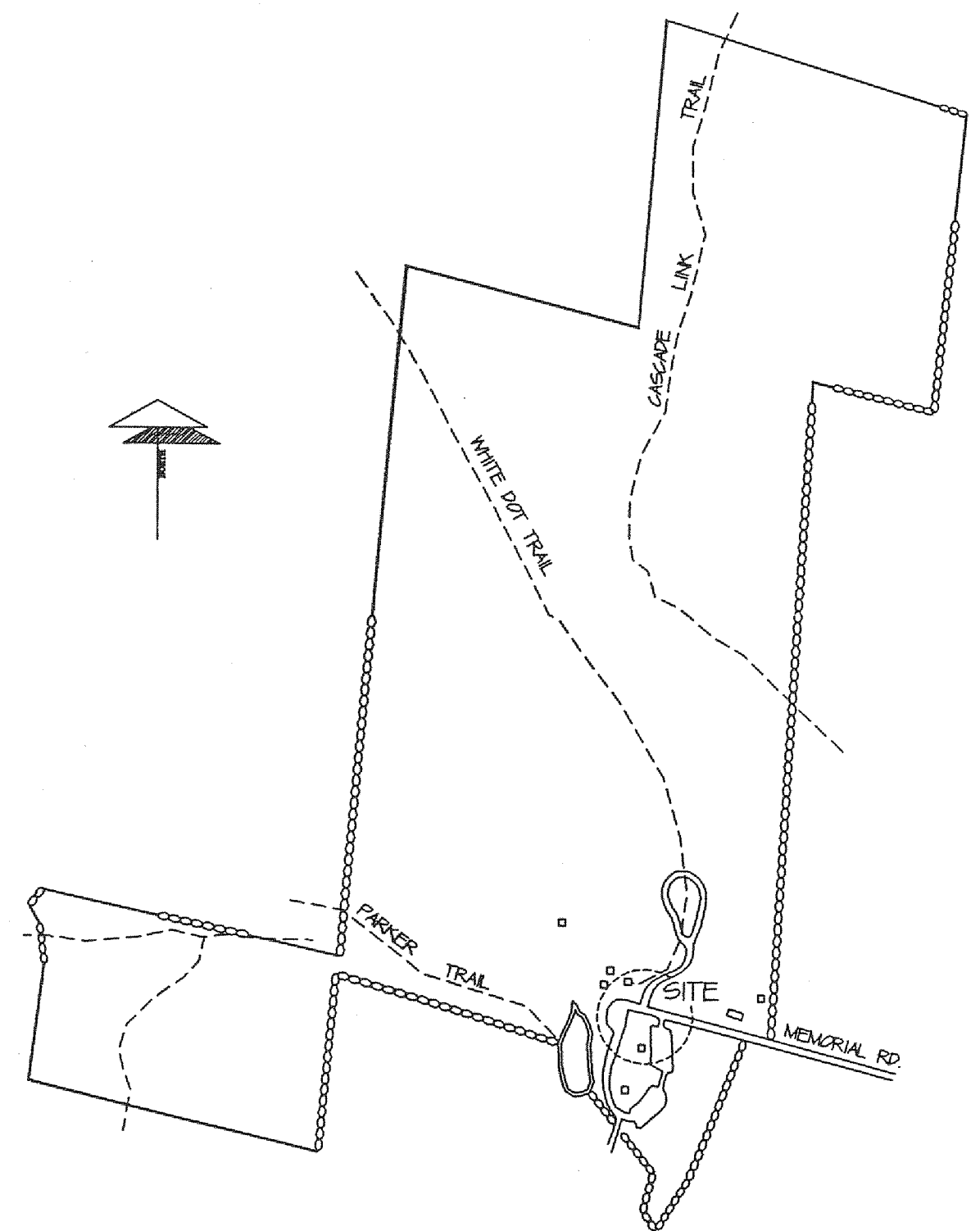
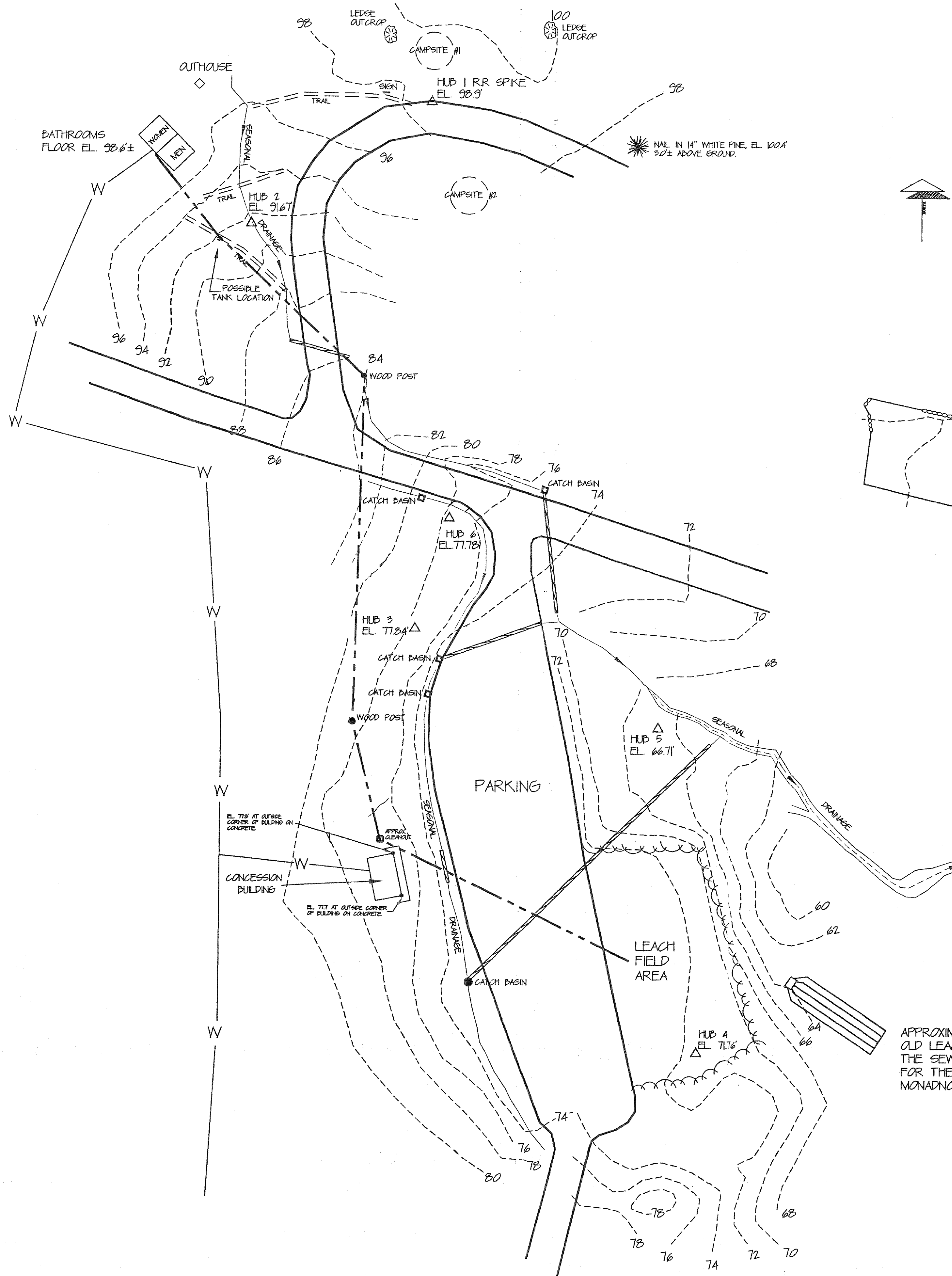


LOCATION



VICINITY

NOTE:

THIS TOPOGRAPHIC MAP IS A COMPILED
LINE AS DEFINED BY MONADNOCK SP.
PERSONNEL, DEC. 1996.

1983 TOPO. PROJECT FOR THE EXISTING
LEACH FIELD.

1987 SITE PLAN FOR GENERAL PARK
IMPROVEMENTS.

1996 TOPO. PROJECT FOR THE PROPOSED
R.V. DUMP STATION.

THE DATUM USED FOR THIS PLAN IS FROM THE
1983 TOPO. PROJECT FOR THE EXISTING LEACH
FIELD.

△ WOODEN STAKE, TRAVERSE POINT.

--- APPROXIMATE LOCATION OF SEWER
LINE AS DEFINED BY MONADNOCK SP.
PERSONNEL, DEC. 1996.

W--- APPROXIMATE LOCATION OF WATER LINE
AS SHOWN ON THE SEWAGE DISPOSAL
SYSTEM FOR TOILET BUILDINGS, JAN. 1984.

BENCH JOB: \QJ3 #42
ACAD DWG: DWG01 MONAD-RV
ADD. LAYERS: TOPO83, TOPO87
TOPO96
REMARKS: SHEET #1

STATE OF NEW HAMPSHIRE
DEPT. OF RESOURCES & ECONOMIC DEV.

MONADNOCK STATE PARK
JEFFREY, NEW HAMPSHIRE

SCALE: 1" = 40' DATE: FALL 1996
AREA= SURVEYED BY: DRED.