

# NH FORUM

*For those who shape the built environment*



## Your Board at Work

The AIA NH Board of Directors recently held its 2011 Board Retreat in Sugar Hill, NH. Each year we rent a 19-century farm house for an evening and a day during which we cook our own meals, play Pictionary and pool; spend hours reviewing the Chapter's programming and member services, finances, and plans for the future; and take the time for some lively conversation about architecture and the practice of architecture. (More information on page 8.)

From left, above, are Shannon Alther AIA, secretary; Katie Sutherland AIA, director; Karolina Burt AIA, vice-president; Heather Rowan, Affiliate director; Paul Bourbeau AIA, incoming director; Dale Doller, president-elect; Nathan Stolarz AIA, Associate director; Melissa Morancy Assoc. AIA, incoming Associate director; Jay Lawrence Purcell AIA, treasurer; Michael Morin AIA, immediate past-president; Caleb Sloan AIA, director; Scott Vlasak AIA, director; and Jim Loft AIA, president.

Your Board members are always available to talk with you. You can find their contact information on the website or find them at one of our events. They are now wearing blue ribbons on their name tags so you can easily spot them!

Published by

AIA New Hampshire

with contributions

from the Granite State

Landscape Architects

and Plan NH

## Inside View

Perspective	2
Young Architects Forum	3
AIA Resource for Stalled Projects	4
NCARB IDP 2.0 Update	5
GSLA	6
PlanNH	7
From the Executive Office	8
Sponsor Recognition	9
Sketch of the Month	10
Construction Summary	11
Photo of the Month	12
Calendar	12



## AIA New Hampshire

### AIANH Board of Directors

President: **James Loft AIA**  
 President-Elect: **Dale Doller AIA**  
 Vice President: **Karolina Burtt AIA**  
 Secretary: **Shannon Alther AIA**  
 Treasurer: **Jay Lawrence Purcell AIA**  
 Immediate Past President:  
**Michael Morin AIA**  
 Directors: **Caleb Sloan AIA**  
**Katie Cassidy Sutherland AIA**  
**Scott Vlasak AIA**  
 Associate Representative:  
**Nathan Stolarz AIA**  
 Affiliate Representative:  
**Heather Rowan**  
 Executive Director: **Carolyn Isaak**

*NH Forum* is published monthly by AIA New Hampshire, the New Hampshire Chapter of The American Institute of Architects, with the Granite State Landscape Architects.

AIANH, PO Box 398, Keene, NH 03431.  
 Tel: 603-357-2863; Fax: 603-357-0835; E-mail: [office@aianh.org](mailto:office@aianh.org).

For advertising rates and sizes, contact the AIANH office.

For membership information, contact the AIANH office.

Articles and graphic submissions should be sent to the AIANH office by the first of the month prior to publication.

*NH Forum* Editorial Board:  
**Bruce Hamilton AIA, Heather Rowan, Carolyn Isaak, Executive Director;**  
**Proofreader: John Urdi AIA;**  
**GLSA Liaison: Beth Dermody**  
**PlanNH Liaison: Robin LeBlanc**

The AIANH Editorial Board reserves the right to edit articles for available space and to review all material for appropriateness prior to inclusion.

The editors of the *NH Forum* seek to encourage a lively discussion of design and other topics of concern to designers. Opinions and proposals presented in the newsletter are those of the writers to whom they are attributed and are not a statement of official policy by AIANH, unless so stated.

Visit our Website at [www.aianh.org](http://www.aianh.org)

**NH Forum**

## Perspective

*Point of view from the president of AIANH*



James Loft AIA  
 President 2011

Did you get a chance to tune in to the **2011 Solar Decathlon**?

Not the best at staying architecturally current (with many magazines in my office yet to be opened), I had heard about the Decathlon in the past but have never taken the time to find out what the event was really about. I was recently biding some time and picked up a newspaper that had a short piece about the event. After cruising the Decathlon web site, I'm hooked and plan to make the trip to see the next competition in 2013.

For those of you who aren't familiar, the competition is sponsored by the U.S. Department of Energy. The contestants' houses are judged on 10 separate criteria (hence the Decathlon) with special awards given to five of the points: affordability, architecture, engineering, communications, and market appeal. It is a biennial event that started in 2002 and features state-of-the-art green building. This year there were 19 of the world's most innovative academic teams – 15 from the USA and one each from China, New Zealand, Belgium, and Canada. It all took place at West Potomac Park, close to the National Mall in Washington, D.C.

The biggest change this year was capping the cost of the projects at \$250,000: teams have points subtracted if they exceed the cost limit (I guess Germany won in 2009 with an \$800,000 beauty...). Each team was given a \$100,000 grant to get them started and spent two years developing the design, prefabricating the structure, and studying the efficiency (all while technology is changing!). The final projects were really amazing and showcased the results of unbelievable amounts of innovation and devotion.

After the competition, most of the houses go back to their campuses of origin and are used as study tools for incoming classes. Almost all have "smart meters" and automated tracking devices that can display energy use instantaneously on an iPad! It's hard to believe in the last ten years technology has come so far in the building world.

I think the event finally caught my eye because up to now, there really hasn't been a nationally recognized competition in the architectural world that awards for categories other than design. Not only that, the competitors are all in one place where the public can tour and learn – it's like our own version of the Detroit Auto Show! And let's talk about architectural outreach to the general public; organizers expected more than 100,000 people to visit and attend local workshops. That's a lot of people who might finally begin to understand what an architect really does and how complex the process really is. You could argue the Decathlon is limited in scope: the design is only for residential structures; there is no client; the site is nondescript, etc., however, the end result is a competition and through competition comes innovation. And, this innovation can be shared with many.

When you think about it, our approach to assembling buildings hasn't changed much over the last 200 years. Sure we have had breakthroughs in building materials, accessibility, building codes, renewability and energy efficiency, but the process is still piece by piece, brick by brick. I think the built environment is finally on the verge of being dramatically influenced by technology. In fact it's already well underway. It should be exciting to see what the next ten years will bring. I'll see you on the National Mall in 2013 and we can see for ourselves! By the way, Maryland took honors this year beating out Purdue by 20 points.

For more information, go to [www.solar-decathlon.gov/](http://www.solar-decathlon.gov/). ■

# TOTO®

AIA Strategic Partner

Socially Sustainable Plumbing Technology  
[www.totousa.com](http://www.totousa.com)

# Young Architects Forum

by Nathan Stolarz AIA, AIA/NH Associate Director

## You may be an architect if...

As the year winds down and we enter into the dark ominous days of winter I felt the need to a step back from my usual rundown of industry related updates and instead offer up something a bit more lighthearted. These difficult economic times are making a lot of people who thought they knew they wanted to be an architect re-evaluate their thought process, so below is a test that will definitively let you know if you have what it takes to be an architect.

After reading most of these I'm fully convinced that I am an Architect. Are you?

You may be an architect if:

- You wear a lot of black.
- You don't know anyone who works 40 hours a week.
- You've spent 80% of your life overloaded with work and the other 20% with no work at all.
- You don't have a pension...and aren't sure what one is.
- Retirement is cutting back to 40 hour work weeks.
- Your house will never be finished.
- You envision a world better than it is, hope for client to get it there, and pray that your checkbook holds out until then.
- You wear your bow tie to ...everything.
- If anyone has ever asked you advice on how to fix a network server and you have to explain that you are the other kind of architect...the real kind.
- All your classmates from school who have left Architecture earn twice what you do, but work half the hours.
- You truly believe that you have never actually completely finished a set of working drawings...
- You wear a sports coat with blue jeans.
- You built a new house for yourself and then start remodeling it before you move in.
- You still tweak design details even when driving past a project you completed 10 years ago.
- You devote countless hours to a successful project where the reward is lack of punishment!
- You offer solutions to homeowners at every dinner party, even when you are not asked.
- If you're out for dinner and your children ask you why you're counting ceiling tiles?
- All your vacation pictures are of buildings and vistas, but no kids or spouse.
- Simple explanations take 30 minutes.
- When you do not work overtime, you get worried and start looking for work.
- You can't explain anything without making a sketch of it.
- You excel at the game "Pictionary".
- You can letter upside down, entertaining clients and party guests alike.
- You say "letter." Most of the human race calls that "writing" by the way.
- When you walk into a room/space and look up and then around.
- You can say MASONRY instead of MASONARY.
- After winning the lottery, you are asked what you plan to do with your winnings, and you reply "Stay in business until the money runs out."
- Upon learning what you do, do others often say to you, "I wanted to be an architect, but I wasn't good at math"? ■

*If you are interested in submitting ideas for future programs, have thoughts about the future of the profession as a young architect, liked to be added to the email list or would like to get involved, we'd love to hear from you. Direct emails to [nathanstolarz@hotmail.com](mailto:nathanstolarz@hotmail.com).*

If your design firm needs professional liability insurance,

## think . . .

Think expertise  
Think Bixby  
Think service  
Think Bixby  
Think coverage  
Think Bixby

Bob Bixby  
Bixby Insurance Agency, Inc.  
651 Putnam Pike  
Greenville, RI 02828  
Tel (401) 949-2120  
Fax (401) 949-5577



For over 30 years, our **engineers, planners and scientists** have partnered with our architect peers throughout the east coast. Through a collaborative approach to design, we have provided integrated **transportation, infrastructure** and **environmental** services to a wide range of clients.

Collaborating with the USGBC on  
Roadmap to a Green Campus.  
Coming soon to [www.usgbc.org](http://www.usgbc.org).



6 Bedford Farms Drive, Suite 607  
Bedford, New Hampshire 03110  
[www.vhb.com](http://www.vhb.com)



## Job Opportunities Positions Wanted

Job listings and positions sought listings are on the AIA NH website: [www.aianh.org/jobs.asp](http://www.aianh.org/jobs.asp). To submit an ad, please email ad text to [office@aianh.org](mailto:office@aianh.org). Ads are free for AIA NH members and \$80 for four months for non-members. Please include your contact information with your ad listing.

*terra firma*  
landscape architecture



4 Market Street, Portsmouth, NH 03801  
603.430.8388

*experience the landscape*  
at

[www.terrafirmalandarch.com](http://www.terrafirmalandarch.com)

or

[www.facebook.com/terrafirmalandarch](http://www.facebook.com/terrafirmalandarch)

## AIA Resource for Stalled Projects

by Clark Manus FAIA, AIA President



AIA has recently launched a major initiative – one that addresses the number one issue facing our members in this sluggish economy – access to credit.

Despite record low interest rates, banks remain reluctant to lend to the design and construction sector. As the May Architecture Billings Index showed, there are hundreds, if not thousands, of commercial building projects nationwide that have been stalled for no other reason than lack of financing.

To address this problem, AIA announced in June at CGI America, a Clinton Global Initiative jobs conference in Chicago, our intent to develop a database of sorts that would assemble projects that have been stalled for no other reason than lack of financing. Since then, we have been encouraged by the number of investment firms that reached out to us to be listed in this database. So, we undertook a four-month long effort to develop a page on AIA.org – the Stalled Projects page, [www.aia.org/stalledprojects/index.htm](http://www.aia.org/stalledprojects/index.htm), which will act as a networking website for real-estate investors and your clients, the developers.

This unique page of AIA.org seeks to put you more in control of your own destiny. Instead of waiting for the banks, you will be able to reach out to a group of investors who have chosen to list themselves for the sole reason of lending money to creditworthy projects. The

AIA Stalled Projects page will be a place where developers and investors can meet to exchange information. Investors looking to invest in commercial real estate will be able to peruse a list of projects seeking capital. Developers looking for investment capital will be able to look up and reach out to investors willing to lend.

In order for this initiative to be a success, we need your help. We need members to list their stalled projects on this page, to populate the site so that investors will find it worthwhile. AIA will announce this initiative in a major press announcement November 7. As times goes on, we hope to have hundreds of projects and hundreds of investors populating this site, interacting and building working relationships with one another. Please email any comments about the site to [stalledprojects@aia.org](mailto:stalledprojects@aia.org).

There's money out there for your project; all that's needed is for you to list it on the AIA's Stalled Projects page.

Thank you! ■

### Renew Your AIA Membership Now to Enter a Drawing for an iPad2

AIA members who renew their membership by December 31 will be entered into a drawing for a new iPad 2 and will receive a coupon code for one free CEU through AIA Virtual Convention that can be used by the end of January. Take advantage of this offer and maybe win a new iPad! Watch for your 2012 invoice coming soon by email.

Energy efficiency starts with you,



but it is much more  
than changing a lightbulb.

The premier source for:

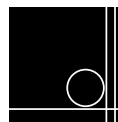
-  Deep Energy Retrofits
-  Building Optimization
-  Investment Grade Energy Analysis.



LEED AP & BPI Certified Analysts

Post Office Box 2523, Concord, NH 03301  
888-274-0565 • [www.ibeanh.com](http://www.ibeanh.com)

# NCARB Releases IDP 2.0 Update

 NCARB has implemented the final phase of Intern Development Program (IDP) 2.0 3-5 April 2012. This phase will include new experience categories and areas, simplified experience settings, and an enhanced electronic system to report IDP experience.

Announced in 2009, IDP 2.0 is the most significant update to the Intern Development Program (IDP) since its inception in the 1970s. Using the 2007 Practice Analysis of Architecture as a guide, the program requirements are being updated to more closely align with

the current practice of architecture, to help ensure that interns acquire the comprehensive training that is essential for competent practice, and to make reporting experience fundamentally easier.

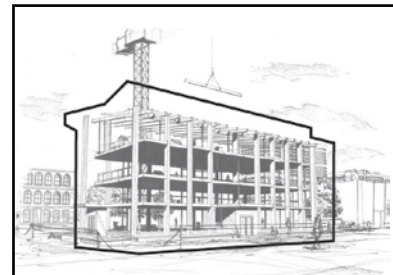
The changes to the program offer many benefits to interns by allowing them to complete some of the experience requirements during periods of unemployment, expanding program definitions, and simplifying the reporting process.

Learn more at: [www.ncarb.org/Experience-Through-Internships/IDP-2.aspx](http://www.ncarb.org/Experience-Through-Internships/IDP-2.aspx). ■

## Submit Your Details...

Do you have an interesting job on the boards or one that is newly completed? How about a new hire, a promotion at your firm, or someone had a baby? Maybe you've recently received an award or had your project featured in a magazine?

Send us the information and we'll print it in our "Details..." columns. Email to [office@aianh.org](mailto:office@aianh.org). Phtographs can also be used (300 ppi).



**Build with an added layer of protection.**

Download the new **Guide for Sustainable Projects** and learn more about our full library of Contract Documents at [aia.org/contractdocs](http://aia.org/contractdocs) or call 800-242-3837.

*Local Distributor:*

AIANH | PO Box 398 | Keene, NH 03431  
603-357-2863 | [www.aianh.org](http://www.aianh.org)

**AIA Contract Documents®**  
THE INDUSTRY STANDARD.

## Design Flexibility. Performance. Aesthetics.



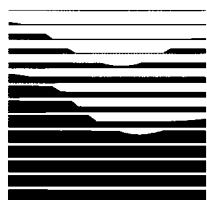
Clean sight lines, large daylight openings, and interior and exterior handles with matching aesthetics make Integrity's doors stunning. Choose from the low maintenance performance of an All Ultrex Sliding Patio Door to the elegant welcome of a Wood-Ultrex French Door – all offer effortless operation, dependability and style.

Selectwood  
Marvin Windows and Doors Showcase  
Portsmouth, NH • 800.922.5655  
[www.selectwood.com](http://www.selectwood.com)

Marvin Design Gallery by  
Windows & Doors By Brownell  
West Lebanon, NH • 866.928.5558  
[www.wdbrownell.com](http://www.wdbrownell.com)

R.P. Johnson & Son Marvin Showcase  
Andover, NH • 800.526.0110  
[www.rpjohnsons.com](http://www.rpjohnsons.com)

## GRANITE STATE LANDSCAPE ARCHITECTS



GSLA

New Hampshire Section,  
Boston Society of  
Landscape Architects,  
A Chapter of the  
American Society  
of Landscape Architects

## Board of Directors

## Chair

Robert P. Clarke, ASLA  
Allen & Major Associates  
rclarke@allenmajor.com

## Treasurer

Eric Buck, ASLA  
Pollock Land Planning  
eric@pollocklandplanning.com

## Secretary

Mike Krzeminski  
TFMoran  
Mkrzeminski@tfmoran.com

## Governmental Affairs

R. Gordon Leedy, ASLA  
Vanasse Hangen Brustlin, Inc.  
gleedy@vhb.com

## Newsletter Editor

Beth Dermody, RLA  
Bethany Dermody, Lands. Arch.  
bethdermody@yahoo.com

## GSLA

Granite State Landscape Architects  
New Hampshire Section  
Boston Chapter, ASLA  
PO Box 1106  
Concord, NH 03302-1106

www.gsla-online.com

# ASLA Releases More Than 475 Green Structure Case Studies

by Jared Green, Editor, The Dirt Blog, ASLA (<http://dirt.asla.org>)

The Environmental Protection Agency (E.P.A.) recently started a national rulemaking process, with the goal of creating a new, comprehensive program to reduce stormwater runoff. The E.P.A. announced that during this rulemaking it will evaluate green infrastructure design techniques that mimic natural processes to evapotranspire, infiltrate and recharge, and harvest and re-use stormwater. Typical green infrastructure systems for managing stormwater include green roofs and walls, bioswales, rain gardens, bio-retention ponds, and permeable pavements. Street and park trees also provide great stormwater management benefits.

The E.P.A. asked ASLA to collect case studies on projects that successfully and sustainably manage stormwater. More than 300 ASLA members responded with 479 case studies from 43 states, the District of Columbia, and Canada.

New Hampshire included these cases: 100 Domain Drive Parking Lot Renovations, Exeter; Concord Cooperative Recycling Facility, Concord; State Street Reconstruction, Portsmouth; and West Peterborough TIF District Improvements, Peterborough. (Find links to these at: [www.asla.org/stormwatercasestudies.aspx](http://www.asla.org/stormwatercasestudies.aspx).)

Not only do these projects showcase landscape architecture, but they also demonstrate to policymakers the value of creating green infrastructure policies and investing in these approaches.

Green infrastructure and low-impact develop-

ment (LID) approaches, which are less costly than traditional grey infrastructure projects, can save communities millions of dollars each year and improve the quality of our nation's water supply. Also, these systems provide multiple benefits: They store carbon, provide wildlife habitat, and clean and cool the air, creating more livable communities in the process.

Other facts about the case studies:

- 55 percent of the projects were designed to meet a local ordinance.
- 88 percent of local regulators were supportive of the green infrastructure projects submitted.
- 68 percent of the projects received local public funding.

Along with this effort, ASLA continues to work with Natural Resources Defense Council (NRDC) and American Rivers to promote green infrastructure policies. ■

## Aqua-Bric®

A pedestrian-friendly permeable pavement that meets ADA criteria.



To schedule a Permeable Pavement  
CEU Lunch & Learn  
call 781-894-3200 today!



IDEAL CONCRETE BLOCK COMPANY, INC.  
Westford and Waltham MA

[www.IdealConcreteBlock.com](http://www.IdealConcreteBlock.com)

# MILlican

## Specimen Trees & Shrubs

603-435-6660

[www.MNIPLANTS.com](http://www.MNIPLANTS.com)





**PLAN NH**  
Visioning for Sustainable Communities

## Notes from Plan NH

Plan New Hampshire, The Foundation for Shaping the Built Environment (Plan NH), is a 501(c) 3 non-profit organization formed in 1989.

Our purpose is to contribute to the quality of life in New Hampshire communities by promoting excellence in sustainable planning, design and development of the built environment. We are also strong champions of Smart Growth.

Our New Hampshire-focused membership is comprised of architects, landscape architects, engineers, planners, contractors and others with an interest in promoting and implementing environmentally, economically and socially sustainable communities. This diversity of membership brings a unique variety of views and perspectives to our approach to shaping New Hampshire's built environment.

President  
North Sturtevant, JSA Architects

Vice President  
Bill Jean, Fulcrum Associates

Secretary  
Ryan Bianchetto,  
Allen & Major Associates

Treasurer  
Galen V. Nichols, Edward Jones

Executive Director  
Robin H. LeBlanc

Plan NH  
PO Box 1105  
Portsmouth, NH 03802  
603-452-PLAN (452-7526)  
[www.plannh.org](http://www.plannh.org)

**H**ebbron (pop 613) was one of the five towns selected for a Plan NH Design Charrette. The team (Scott Collard, Maggie Stier, Gordon Cormack, Norman Larson, and led by Brian Murphy) met there around noon on Friday, September 23. The town had requested we recommend ways they could upgrade their town facilities, while not undermining the charming look and feel of their quaint town center – “We want it to look exactly the same,” they said over and over in the listening sessions. “The way our town center looks is what makes Hebron Hebron.”

Plan NH does not conduct design charrettes to re-purpose buildings, but we did see this as an exercise in bringing 21<sup>st</sup> century functionality into a 19<sup>th</sup> century setting, while not detracting from the strong sense of community and sense of place that exist there.

The report is yet to be published, but we can say that recommendations were made that met the requirements.

Hebron is a great example of a community's tug-of-war between knowing change is necessary, while wanting to hold on to the familiar. Here, they have good reason to: it is really a beautiful little town center, with a large green and white houses and town buildings surrounding it, as well as a general store/Post Office. One is sure, on first rounding the corner



and seeing it all, that some sort of time traveling has taken place. But the reality is that this is a living town, its buildings serving real people, with real day to day living – taxes, permits, library ... it is not Disneyland, with quaint facades playing a passive role except to charm the viewer. As such, Hebron and other towns need to realize that change has always taken place – sometimes for good, sometimes not; sometimes big changes (imagine the discussions around the first paved roads, or the first electrical lines!) sometimes incremental. Finding that balance between accommodating current and anticipated needs while preserving the sense of place is more important now than ever before. As we face a changing landscape in the Granite State, we must be ever mindful that this balance must always be kept in mind, no

matter where we are, if we are to continue to be the Granite State in which people love to live, work and play. ■



## Details...

**Dennis Mires, P.A., The Architects** has announced the recent completion of approximately 25,000sf of fit-up for DYN, Inc., in Manchester's Millyard. The space reflects the collaborative way this growing company successfully operates. The design team included Interior Designer, Debra McBride, McBride Design and the fast-tracked construction was completed by Ken Dionne, KRD Builders, Inc.



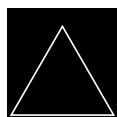
**Bruce Hamilton AIA** was a member of the AIA National Education Committee this year. The committee reviews potential programs for selecting continuing education for the 2012 AIA Convention and made a deliberate effort this year to involve more partners in vetting content in order to improve the quality and rigor of the education offerings.

Bruce also recently returned from the A+Den Conference in Philadelphia, "Design in Action." A+Den is the Architecture + Design Education Network, whose mission is to advance public interest and education in design and architecture. The conference brings together more than 200 architects, designers, cultural leaders, community organizers, and K-12 design educators for a 2.5-day exploration of the latest ideas in community design, outreach, and design education.

Bruce has been the leader for our NH Learning by Design Program, setting up elementary, middle-school, and high school programs.

## From the Executive Office

*by Carolyn Isaak, Executive Director*



The AIANH Board of Directors meets monthly and once a year attends a "Board Retreat," which took place this year on October 27-28 in Sugar Hill, NH (see cover photo).

The retreat is a rare chance for the board to take some time to review its performance and plan for the future. Intense discussions of our programs and governance can help the board better understand how its contribution can "add value" to the Chapter and maximum performance.

The retreat provides more time than a regular board meeting for meaningful discussions and to create action agendas for the coming year. It is also an orientation for new members and a review for current members on where we are and where we are going.

At this year's retreat, led by incoming president Dale Doller AIA, we took a close look at each of our programs – what worked, what didn't, and how we can improve them in the future. These include our Chapter Meetings, Continuing Education Days, the Awards Program, the Education Committee's NH Learning by Design programs, Young Architects Committee and IDP, and the Environmental Guild. The Public Relations/Membership Committee, Affiliates Committee, Legislative Committee, and the NH Forum Editorial Board are other AIANH subgroups that help manage the Chapter, advocate for architects and the practice of architecture, and inform our members.

AIANH is a relatively small Chapter, but also one that is spread out, so it is a challenge to provide programming that is easily accessible for everyone. Since the bulk of our members are located in the Concord, Manchester, Seacoast areas, most of our meetings land in one of these places. But we make an effort to have events in other locations. In the past few years we've been to Peterborough, Keene, and Hanover several times. We'll be planning something in the northern region soon; the last one there was in Jackson several years ago.

This past year the Board worked hard to keep costs as low as possible for members to attend our events and also offered 1/2 price discounts to interns and newly licensed architects. We are so grateful to our meeting

sponsors, as we absolutely could not run our education programs without them.

The Chapter has taken a financial hit since 2008, along with everyone else, and 2011 marks the second year we will end the year in the red, despite deep cuts in spending. Fortunately we had a reserve fund to dip into, so we are managing, but planning an even tighter budget for 2012. The over-arching goal, as always, is to continue offering our members top rate programming and service. Facility and catering costs have not gone down, so just the basic meeting needs are a challenge. Again, thanks to our sponsors for making all of our programming possible. Please see a list of this year's sponsors on the next page.

This year we also used some reserve funds to create a new website, which should be released within the next month. You will soon be receiving information about loading content about your firm onto the site. We think you'll be very happy with the new site and will find it much more useful. It is designed to serve potential clients, AIA members, and other building industry professionals.

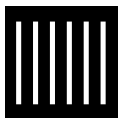
This retreat was my 12<sup>th</sup> one! Though the faces change over the years, I am continually impressed by the dedication and good spirits of the AIANH Board members, who work hard and have fun doing it. Their service and commitment to the profession and the AIANH Chapter is impressive. I think that any one of them would also tell you it is a rewarding experience and has helped them grow both professionally and personally. If you are interested in helping out on a committee or serving on the board, please contact one of the board members or myself. ■

### Share your Knowledge – Inspire a Student!

We are in need of volunteers for our successful Learning by Design Programs, as well as for high school visits to introduce the profession and critique students' High School Design Competition projects. Please call the AIANH office, 357-2863.



# Thanks to Our Sponsors for 2011



AIANH gives a very special thank you to our sponsors for 2011. This has been a tough year for everyone, so we know that making decisions about sponsorship has been difficult and not a lot of sponsorship money available. We are extremely grateful to these companies that stepped forward to help us continue our Design Awards program and Continuing Education Programs.

Thanks to:

**Spaulding Brick Co. and Charron Inc.:** 2011 and 2012 AIANH Awards Program;

**ReVision Energy:** Chapter Meeting, Pandora Mill Renovation, Manchester, March 24;

**Bruce Ronayne Hamilton Architects and Lavallee Brensinger Architects:** "Zero Net Energy: Technology & Aesthetics," by Ellen Watts AIA, April 28 at Keene State College;

**Pella Windows and Doors:** AIANH House Tour, Seacoast area, June 23;

**Bentley Prince Street:** Chapter Meeting: AIANH & The Furniture Masters, Canterbury Village, Aug. 18;

**Armstrong World Industries:** Chapter Meeting, The Eliot at River's Edge, Manchester Sept. 15;

**TOTO USA, Thermotech, Yusen Associates/Lutron, APA and Phoenix Controls, Burt Process Equipment, Charron Inc., and National Fiber:** AIANH/AIAVT Chapter Meeting, Life Sciences Center, Dartmouth, Oct. 20;

**MicroCad:** Chapter Meeting, Implementing Revit for the Office: A Project Manager's Perspective, Pease Golf Course, Nov. 8

Additional 2011 Chapter Meetings for which we did not secure sponsors were: "The Architect, the Heritage Commission, and the Demolition Review Ordinance," Concord, Feb. 23 and "Weston Solutions LEED Gold Office Building," Concord, May 19. ■

## THE ARCHITECTS' CHOICE SINCE 1933

**Spaulding Brick Co., Inc.**



28 Daniel Plummer Road  
Goffstown, NH 03045  
(603) 647-8442 Fax (603) 647-8439

5 Lopez Road  
Wilmington, MA 01887  
(617) 666-3200 Fax (617) 625-8110

250 Station Street  
Cranston, Rhode Island 02910

**Built For The Real World**

**ENERGY RECOVERY WHEELS**

- new and retrofit applications ■ 70-90% efficiency
- 0% cross contamination ■ carbon footprint reduction
- sustainability ■ LEED credit ■ 25 year design life
- 10 year parts & labor warranty ■ 12-18 month payback

**TEI THERMOTECH ENTERPRISES INC.**

5110 W. Clifton St. Tampa, FL 33634 Tel 813-965-4701 Fax 813-965-5205 www.thermotech-usa.com

ABINGDON SQUARE PARK  
Goffstown, NH



**TFM<sup>®</sup> Design**  
**Landscape Architects**

*Creating sensitive and thoughtful  
land planning and landscape plans.*

CONTACT: Anne Cruess, ASLA

(603) 472-4488 www.tfmoran.com

48 CONSTITUTION DRIVE, BEDFORD, NH 03110

WHEN  
WATER QUALITY  
MATTERS



(800) 287-5767  
www.secondwindwater.com

**Secondwind  
Water Systems, Inc.**

The Water Quality Professionals

## Breathe Easier...

*Employee productivity depends  
on good air quality and a  
healthy work environment*

*RPF Associates has the expertise and  
experience you can rely on when confronting  
environmental health and safety issues.*

- Air Quality Testing and Laboratory Analysis
- Worker Health and Safety Training
- Asbestos and Mold Inspections
- Infrared Thermal Imaging Surveys
- Environmental Site Assessments
- Industrial Hygiene and OSHA Compliance



**RPF Associates, Inc.**  
ENVIRONMENTAL TESTING & CONSULTING

Offices in Northwood, NH and Amesbury, MA  
Call 1-888-SAFE-AIR or visit www.airpf.com

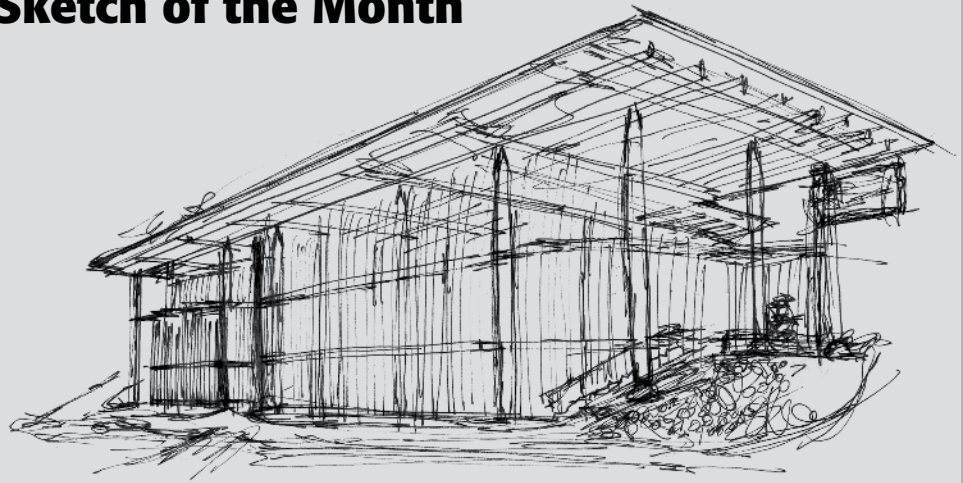
## Details...

Renovations of the New London Inn in New London, NH. were recently completed. The team included **Banwell Architects** and **North Branch Construction**. This historic building, built in 1792, has received several upgrades throughout a three-month job that include repairs to the heating control system, interior renovations, and new insulation and siding. The upgrades have improved the Inn's energy efficiency while maintaining its historic charm and iconic presence in New London. The improvements were performed while the Inn remained in full operation.

**Burnell-Johnson Architects** and North Branch also announce the completion of the renovation and system upgrades of the historic Sugar River Mills in Claremont, NH. The Sugar River Mills property, which once served as a textile mill in the 1800's, offers 162 units of both affordable and elder housing to the residents of Sullivan County. The historic mill buildings on the property consist of the Grist Mill, the Ton-Tine Building, and the M34 Building. Seven 6-unit townhouse complexes were added in the 1982 conversion of the mill buildings into housing.

North Branch also completed the first building turnover in Phase 2 of the Kingswood Regional School Campus's multi-school additions and renovations project. The new Automotive and Agricultural Building will serve students enrolled in the Agri-Science and Automotive Service Technology programs offered by the Vocational School. The project includes a new Administration Building addition along with a renovated kitchen for the Middle School and renovated gymnasiums for both the Middle and High Schools. North Branch and Town Officials, along with **CMK Architects** continue to work together to creatively schedule building occupancy, while maintaining student safety as their first priority. Detailed coordination between the Governor Wentworth Regional School District, three school principals, and the construction manager and architect each week has been vital in relocating students and furnishings to accommodate both a busy construction schedule and occupied school campus.

## Sketch of the Month



### Concept Sketch

by Nathan Stolarz AIA, AIA/NH Associate Director

**Submit your Sketch/Painting/Drawing for publication! Please scan your work at 300 ppi and send to [office@aianh.org](mailto:office@aianh.org). Include a caption with it! We look forward to seeing your work – take the time for art!**



Photo by Great Island Photography, LLC

2011 AIA/NH Excellence in Design Merit Award winner:  
Lakefront Cottage Renovation Landscaping by db Landscaping

When we work from the start with the architect and engineer, the client saves time and money in design, installation, and permitting costs...and the results speak for themselves.



**db Landscaping**  
3 Alpine Ct. Suite 1  
P.O. Box 356  
Sunapee, NH  
603.763.6423  
[www.dblandscaping.biz](http://www.dblandscaping.biz)

"Creating Liveable Outdoor Environments"



76 Old Turnpike Road, Concord, NH



**North Branch Construction, Inc.**

(603) 224-3233 • [www.northbranch.net](http://www.northbranch.net)

**We don't just build green, sustainable, and LEED Certified Buildings for our clients - we built one for ourselves.**



# Construction Summary

---

**Project:** DMV Dover Point Substation  
**Cost:** \$539,500  
**Location:** Dover, NH  
**Owner:** State of NH-DOT  
**Architect:** Tennant / Wallace Architects  
**Engineer:** Foley Buhl Roberts & Associates-  
**Gen. Cont.:** James J Welch Co.

**Project:** Regional Training Institute &  
 Barracks Facility  
**Cost:** \$23,931,700  
**Location:** Pembroke, NH  
**Owner:** State of NH-DOT  
**Architect:** Oak Point Associates  
**Gen. Cont.:** TLT Construction Corp

**Project:** HVAC System  
**Location:** Plymouth, NH  
**Owner:** Plymouth Village Water & Sewer  
 District  
**Proj. Mgr:** Plymouth Area Renewable  
 Energy  
**Const. Mgr.:** Bruss Construction Inc.

**Project:** Retail Building (Shell) (Brickyard  
 Square) (Building #1 and Building #2)  
**Location:** Epping, NH  
**Owner:** Waterstone Retail Development  
**Architect:** Prellwitz & Chilinski Assoc. Inc.  
**Engineer:** Jones & Beach Engineers, AKF  
 Group, Siegel Associates Inc.  
**Gen. Cont.:** DeStefano & Associates

**Project:** Hanover Inn Additions &  
 Renovations (Dartmouth College)  
**Location:** Hanover, NH  
**Owner:** Dartmouth College  
**Architect:** Cambridge Seven Associates  
**Engineers:** Pathways Consulting LLC,  
 Commercial Construction Consulting,  
 Hawksworth Bibb Inc.  
**Lands. Architect:** Saucier & Flynn  
 Landscape Architects  
**Gen. Cont.:** Engelberth Construction Inc.

**Project:** Mixed Use Building  
**Location:** Portsmouth, NH  
**Owner:** 233 Vaughan Street LLC  
**Engineers:** Ambit Engineering, Engineered  
 Building Systems Inc., Petersen Engineering-  
**Gen. Cont.:** Martini Northern Inc.

**Construction Summary is provided by  
 Construction Summary of NH, Inc.  
 734 Chestnut St., Manchester, NH 03104**

**Project:** Belknap County Administrative  
 Office Renovations  
**Cost:** \$470,000  
**Location:** Laconia, NH  
**Owner:** Belknap County  
**Architect:** Davis Goudreau Architects Inc.  
**Engineer:** WV Engineers  
**Contractor:** Careno Construction Co.

**Project:** Thayer School Of Engineering  
 Floor Addition  
**Location:** Hanover, NH  
**Owner:** Dartmouth College  
**Architect:** Koetter / Kim Associates  
**Engineer:** RMF Engineering, Lim  
 Consultants  
**Gen. Cont.:** Estes & Gallup

**Project:** Mixed Use Building  
**Location:** Portsmouth, NH  
**Owner:** 233 Vaughan Street LLC  
**Engineers:** Ambit Engineering, Engineered  
 Building Systems Inc.,  
 Petersen Engineering  
**Gen. Cont.:** Martini Northern Inc.

**Project:** Homewood Suites & Conference  
 Center (100 Rooms)  
**Location:** Lebanon, NH  
**Owner:** Chaloux Properties LLC  
**Engineer:** Holden Engineering  
**Const. Mgr.:** Pro Con Inc.

**Project:** Community Room Upgrades  
**Cost:** \$12,450  
**Location:** Keene, NH  
**Owner:** City Of Keene  
**Contractor:** Baybutt Construction

**Project:** Energy Retrofit (Discover  
 Portsmouth Center)  
**Location:** Portsmouth, NH  
**Owner:** Portsmouth Historical Society  
**Architect:** TMS Architects  
**Const. Mgr.:** Martini Northern Inc.

**Project:** Warehouse Building Exterior/  
 Mechanical & Energy Renovations (PJ  
 Noyes Company) (Design/Build)  
**Cost:** Approx. \$1,000,000  
**Location:** Lancaster, NH  
**Owner:** PJ Noyes Co.  
**Architect:** Daniel Scully Architect  
**Consultant:** The Jordan Institute  
**Engineers:** Downing Engineering, GWR  
 Engineering, Engineering Ventures  
**Const. Mgr.:** MacMillin Co.

**Project:** School Addition  
**Location:** Nottingham, NH  
**Owner:** Nottingham School District  
**Const. Mgr.:** Bonnette Page&Stone

**Project:** Alice Peck Day Memorial Hospital  
 Renovations & Expansion  
**Location:** Lebanon, NH  
**Owner:** Alice Peck Day Memorial Hospital-  
**Architect:** Lavallee/Brensinger PA  
**Engineers:** Clough Harbour & Associates,  
 Fitzmeyer&Tocci Associates, Foley Buhl  
 Roberts & Associates  
**Const. Mgr.:** Engelberth Construction

**Project:** New Automobile Showroom &  
 Office - General Shop Improvements  
 (Cantin Chevrolet)  
**Location:** Laconia, NH  
**Owner:** Cantin Chevrolet  
**Architect:** Misiaszek & Turpin PLLC  
**Engineer:** Rist Frost Shumway Engineering  
**Const. Mgr.:** Bonnette Page&Stone

**Project:** Elderly Housing (The Meeting  
 Place) (Building 2)(26 Units)  
**Location:** Exeter, NH  
**Owner:** c/o Construction Manager  
**Architect:** Burnell/Johnson Architects  
**Engineers:** Civilworks, Downing Engineer-  
 ing, Anderson Consulting Engineers  
**Gen. Cont.:** AW Rose Construction LLC

**Project:** Goldenbrook School Kindergarten  
 Addition  
**Location:** Windham, NH  
**Owner:** Windham School District-SAU 28  
**Architect:** Lavallee/Brensinger PA  
**Engineer:** Appledore Engineering  
**Const. Mgr.:** Bonnette Page&Stone

**Project:** Medical Office & Outpatient Treat-  
 ment Facility (Addition & Renovation To  
 Former YMCA Building)  
**Location:** Nashua, NH  
**Owner:** Southern New Hampshire Medical  
 Center  
**Architect:** Dennis Mires The Architect  
**Const. Mgr.:** Fulcrum Associates

**Project:** Rivermead Retirement Community  
 Expansion  
**Location:** Peterborough, NH  
**Owner:** Rivermead  
**Architect:** JSA Inc.  
**Engineers:** TF Moran  
**Const. Mgr.:** Cutler Associates



## Calendar of Events

**Nov 8** AIANH Chapter Meeting—Implementing Revit for the Office: A Project Manager's Experience, Pease Country Club, Portsmouth, NH, 5:30 - 8:45 pm, dinner included. *1.5 AIA CEUs.*  
**Sponsored by MicroCAD.** [www.aianh.org/aia\\_events.asp](http://www.aianh.org/aia_events.asp)

**Nov 10** USGBC NH Gala, Residence Inn, Portsmouth, [www.usgbcnh.org](http://www.usgbcnh.org)

**Nov. 16-18** Build Boston, Seaport World Trade Center, Boston, [www.buildboston.com](http://www.buildboston.com)

**Dec. 8** Plan NH Holiday Gathering, One Liberty Lane, Hampton, [www.plannh.com](http://www.plannh.com)

**Dec. 10-Jan 20** **AIANH Excellence in Architecture Awards Submissions Exhibit**, NH Institute of Art, Manchester, NH. Visit the exhibit and vote for your favorite projects in the People's Choice Award program.

**Jan 20** **AIANH Excellence in Architecture Awards Banquet**, NH Institute of Art. Snow date, January 27. **Sponsored by Spaulding Brick and Charron Inc.**, [www.aianh.org/aia\\_events.asp](http://www.aianh.org/aia_events.asp)

**Jan 27-28** Plan NH Charrette, Rindge, [www.plannh.com/charrettes.php](http://www.plannh.com/charrettes.php)

**Mar 6-8** NESEA Building Energy 12, [www.nesea.org/be12/](http://www.nesea.org/be12/)

**Thank you to our Sponsors and Exhibitors for the October 20 Joint AIANH-AIAVT Meeting at Dartmouth:**

Thermotech

TOTO USA

Yusen/Lutron

Alfieri Proctor Associates (APA) and Phoenix Controls

Burt Process Equipment

Charron, Inc.

National Fiber



**Thermotech Enterprises Inc.**

**TOTO®**

**NH Forum**

## AIA New Hampshire

AIA New Hampshire  
PO Box 398  
Keene, NH 03431

*Address Service Requested*

Presorted Standard  
US Postage  
PAID  
Permit No. 9  
Jaffrey, NH

*Printed on Recycled paper*

## Photo of the Month



**Kennedy Hall, from the atrium of the NY State Dept of Labor Building in Troy NY, June 2011**

**photo by John Hart, ASLA, Thompson School, UNH**

**We Need More Photos!!!**

**Do you have an**

**interesting photo?** Why not send us on to print? 300 ppi jpegs, approximately 4 x 6 inches, BW or color. Send along a title, brief caption if you like, and your name, to [office@aianh.org](mailto:office@aianh.org).